



R2HC RESEARCH FORUM

10 & 11 September 2019
Royal Holloway University
London, UK

PROGRAMME



Research for health
in humanitarian crises

| **elrha**

CONTENTS

- 2 **INTRODUCTION TO ELRHA & OUR R2HC PROGRAMME**
- 3 **WELCOME TO OUR RESEARCH FORUM 2019**
- 4-5 **AGENDA**
- 6-12 **DAY ONE SESSIONS & SPEAKERS**
 - 7 **Keynote:** Accountability to people affected by humanitarian crises
 - 8-9 **Panel:** Building an effective & inclusive research agenda: can we do better?
 - 10-11 **Panel:** Research methods in crisis-affected populations: quality compromises versus compromising quality
 - 12 **Lightning talks:** South-North research partnerships: what works well?
- 13-21 **DAY TWO SESSIONS & SPEAKERS**
 - 14-15 **Keynote discussion:** The role of research in contributing to improved health outcomes in humanitarian settings: how new evidence is used to inform decision-making
 - 16-17 **Panel:** Beyond IRB approval: some key ethical issues related to humanitarian research
 - 18-19 **Panel:** Research impact: what are the routes for public health researchers to influence humanitarian decision-making?
 - 20-21 **Closing panel:** Reflections & future direction
- 22 **SKILLS BUILDING DAY**
- 23-31 **KEY INFORMATION**
 - 24 **Elrha** team
 - 25 **R2HC** Advisory Group & Funding Committee
 - 26-27 **Venue** map
 - 28-29 **Venue and event** information
- 30-31 **PARTICIPANT LIST**

INTRODUCTION TO ELRHA & OUR R2HC PROGRAMME

We are Elrha. A global charity that finds solutions to complex humanitarian problems through research and innovation. We are an established actor in the humanitarian community, working in partnership with humanitarian organisations, researchers, innovators, and the private sector to tackle some of the most difficult challenges facing people all over the world.

We carry out our work through two funding programmes: our research-focused Research for Health in Humanitarian Crises (R2HC) programme and our innovation-focused Humanitarian Innovation Fund (HIF).

Our R2HC programme aims to improve health outcomes for people affected by humanitarian crises by strengthening the evidence base for public health interventions. This globally recognised programme focuses on maximising the potential for public health research to bring about positive change and inform decision-making in humanitarian response.

Established in 2013, the scale and reach of the programme has grown significantly and gained global recognition and credibility, funding more than 60 research studies across a range of public health fields – including five new research projects in support of the current DRC Ebola crisis. The studies we fund bring together researchers and humanitarian practitioners to undertake vital research, with our own work increasingly focused on engaging with key humanitarian actors to inform policy and practice.

Elrha's R2HC Programme is funded by



NIHR | National Institute
for Health Research

WELCOME TO OUR RESEARCH FORUM 2019

Welcome to our second Research Forum in the unique setting of Royal Holloway, University of London.

This event brings together more than a hundred individuals associated with our R2HC programme, including highly experienced and respected humanitarian health researchers and practitioners, our Advisory Group and Funding Committee members and donors, to discuss key issues related to conducting public health research in humanitarian crises.

As well as the outcomes of individual studies, a significant body of wider knowledge has been generated through the R2HC. This knowledge reflects a wealth of experience from funding research in humanitarian crisis and has highlighted some of the key, cross-cutting issues our community faces. This year's Forum will focus on some of these issues, such as equity and inclusion, research rigour, ethical challenges, and influencing policy and practice.

Additionally, we all strive to better address issues such as equitable research partnerships and engaging with people affected by humanitarian crises. Stimulating panels and breakout sessions will provide the opportunity for discussion on these topics, as well as the sharing of experience and good practice.

Above all, this Research Forum provides a chance for people to meet and collaborate. We are keen to encourage networking and synergies between individuals and organisations, and across disciplines and thematic areas.

If you need help during your time with us, please ask a member of the team. You can see who they are on page 24, and spot them wearing blue lanyards.

Thank you for coming and we hope you enjoy your time with us.

With best wishes,

Jess Camburn (Chief Executive Officer, Elrha)

Anne Harmer (Head of R2HC Programme)

AGENDA

Monday 9 September

From 15:00	Arrivals and check-in	The Hub
17:30	Welcome drinks and registration	Windsor Building
18:00–19:00	Informal welcome, 'get to know you' activities and general networking	Windsor Building
From 19:00	Informal dinner	Founder's Dining Hall

DAY 1

Tuesday 10 September

08:30–09:30	Registration and coffee	Windsor Building
09:30–10:00	Welcome Speakers: Jess Camburn, Therese McGinn (Day 1 Chair)	Auditorium
10:00–10:30	Keynote: Accountability to people affected by humanitarian crises Speaker: Rola Hallam	Auditorium
10:30–11:30	Panel: Building an effective & inclusive research agenda: can we do better? Chair: Gilbert Burnham Speakers: Linda Mobula, Leonard Rubenstein, Monette Zard	Windsor Building
11:30–12:00	Break and refreshments	Auditorium
12:00–13:00	Breakout sessions 1.1 Creating an enabling environment for inclusive research in crisis contexts 1.2 Finding ways to reduce local health worker vulnerabilities through research 1.3 Improving our understanding of vulnerabilities in communities 1.4 Engaging with affected communities	Seminar Room 0.02 Seminar Room 0.04 Seminar Room 1.03 Seminar Room 1.04
13:00–14:00	Lunch	Windsor Building
14:00–15:00	Panel: Research methods in crisis-affected populations: quality compromises versus compromising quality Chair: Francesco Checchi Speakers: Lesong Conteh, Matthew Hunt, Caitlin Tulloch, Courtney Welton-Mitchell	Auditorium
15:00–16:00	Breakout sessions 2.1 Quasi-experimental research designs 2.2 Qualitative data collection and analysis 2.3 Applying a health economics lens 2.4 What the R2HC portfolio tells us about research methods	Seminar Room 0.02 Seminar Room 0.04 Seminar Room 1.03 Seminar Room 1.04
16:00–16:30	Break and refreshments	Windsor Building
16:30–17:15	Lightning talks: South–North research partnerships: what works well? Facilitator: Anne Harmer	Auditorium
17:15–17:30	Closing remarks Speaker: Therese McGinn	Auditorium
19:00	Dinner (BBQ)	Crosslands (South Quad), Founders Building

DAY 2

Wednesday 11 September

08:45–09:00	Welcome and Day 1 recap Speaker: Jimmy Whitworth (Day 2 Chair)	Auditorium
09:00–10:00	Keynote discussion: The role of research in contributing to improved health outcomes in humanitarian settings: how new evidence is used to inform decision-making Chair: Mushtaque Chowdhury Speakers: Alastair Ager, Ann Burton, Miatta Zenabu Gbanya	Auditorium
10:00–11:00	Panel: Beyond IRB approval: some key ethical issues related to humanitarian research Chair: Lisa Schwartz Speakers: Rebecca Esliker, Raffaella Ravinetto, Charles Weijer	Auditorium
11:00–11:30	Break and refreshments	Windsor Building
11:30–12:30	Breakout sessions 3.1 Ethics and novel research design 3.2 South–North research partnerships: how can we do better? 3.3 Data: ownership or stewardship? 3.4 Engaging with affected communities	Seminar Room 0.02 Seminar Room 0.04 Seminar Room 1.03 Seminar Room 1.04
12:30–13:30	Lunch	Windsor Building
13:30–14:30	Panel: Research impact: what are the routes for public health researchers to influence humanitarian decision-making? Chair: Alice Obrecht Speakers: Rabih el Chammay, Daniele Lantagne, Stephanie Stern	Auditorium
14:30–15:30	Breakout sessions 4.1 Engaging national governments in research evidence 4.2 Humanitarian INGOs engage with production, use and uptake 4.3 Co-producing research: identifying solutions to common pitfalls 4.4 Research impact via global coordination mechanisms	Seminar Room 0.02 Seminar Room 0.04 Seminar Room 1.03 Seminar Room 1.04
15:30–16:00	Break and refreshments	Windsor Building
16:00–17:15	Closing panel: Reflections & future direction Chair: Jess Camburn Speakers: Anne Harmer, Chris Porter, Val Shewin, Jimmy Whitworth	Auditorium
17:15–17:30	Thanks and close of Forum Speaker: Anne Harmer	Auditorium

DAY 1



CHAIR:

Therese McGinn, during her more than 30 years of public health work, has focused on using sound data collection and analysis to improve the scope and quality of reproductive health services globally, in order for women and men to make choices about their sexual and reproductive lives. Since the mid-1990s, her work included a substantive focus on the reproductive health of populations affected by wars and natural disasters. Therese is also the Chair of our R2HC Funding Committee.

KEYNOTE ACCOUNTABILITY TO PEOPLE AFFECTED BY HUMANITARIAN CRISES

10:00–10:30

The unique agreements made within the Grand Bargain sent a strong message: the humanitarian system needs to change. We need humanitarian response that is more participatory and inclusive of local perspectives and priorities, driven by local needs and with solutions appropriate for local culture and community. Localised aid can also be much more fast and efficient, reaching those who can use it more quickly and most effectively.

But is change happening? Even now, global humanitarian resources and international efforts marginalise and exclude local responders and humanitarian organisations.

Does research have a role to play in empowering, facilitating, and pushing for the humanitarian system to accelerate progress? To address this question, we are honoured to be joined by Dr Rola Hallam.

Rola is a British–Syrian award-winning consultant anaesthetist, humanitarian, human rights advocate and social entrepreneur. She is also the founder and CEO of CanDo, a not-for-profit social enterprise pioneering a locally-led approach to humanitarian action that enables local medics and aid workers to provide life-saving health services to their communities.

We invited Rola to share her insights on these topics with our community. She will consider what role evidence, research and research communities such as those supported by the R2HC, could play in building a new humanitarian system. One where global citizens with skills, expertise and resources, stand together with the local responders in a coordinated and effective manner.

SPEAKER:

Rola Hallam pioneers a new vision for humanitarian aid delivery in war-zones. Working with various Syrian-led NGOs, she played an integral part in building seven hospitals in Syria including the first ever crowdfunded hospital. Rola is regarded as a global thought leader, advocating for the cessation of targeting of civilians in war zones, the protection of medical neutrality and localisation of aid. As well as being the founder and CEO of CanDo, Rola is also the first Syrian TED Fellow.



PANEL BUILDING AN EFFECTIVE & INCLUSIVE RESEARCH AGENDA: CAN WE DO BETTER?

10:30–11:30

Marginalised groups, including older persons, people with disabilities, ethnic, indigenous and religious minorities, and others, suffer most of all in humanitarian crises. Women are also disproportionately represented within these marginalised populations. This can lead to a lack of access to health services during a crisis and result in poorer health outcomes.

This challenge is well recognised and reflected in the 2030 Agenda and the World Humanitarian Summit commitments, but with the DRC Ebola outbreak, the Rohingya crisis and other ongoing humanitarian emergencies, more work is needed to address these inequities and include marginalised groups in the development and delivery of humanitarian response.

Researchers have contributed hugely to the understanding of inequities, including how past crises, such as those which took place in Rwanda, occurred. But research is less often used to help address issues of inequity before they impact on communities.

How can we maximise the role of research in making sure humanitarian response of the future is equitable and inclusive? How can researchers listen to and include marginalised groups in the research process, while navigating often politically charged settings? What would a humanitarian health research agenda which ‘leaves no one behind’ look like?

This panel will discuss whether opportunities exist for researchers to inform humanitarian policy and practice in this area and what new partnerships, initiatives or approaches might be needed.

Inclusive ‘best practice’ examples by researchers will be shared, as well as lessons learned from situations when research ‘fell short’.

BREAKOUT SESSIONS

12:00–13:00

- 1.1 Creating an enabling environment for inclusive research in crisis contexts
- 1.2 Finding ways to reduce local health worker vulnerabilities through research
- 1.3 Improving our understanding of vulnerabilities in communities
- 1.4 Engaging with affected communities

CHAIR:

Gilbert Burnham is a physician with an MSc and PhD from the London School of Hygiene and Tropical Medicine. He joined the faculty of Johns Hopkins Bloomberg School of Public Health after managing health services in Malawi for 15 years. At Johns Hopkins he founded what is now the Center for Humanitarian Health. He has managed many research projects and has published extensively on health in conflict.



SPEAKERS:

Linda Mobula is an Assistant Professor at the Johns Hopkins School of Medicine and Research Associate at the School of Public Health. She is currently deployed to DRC as a Health Specialist with the World Bank. Linda previously worked as an Infectious Disease advisor with USAID/OFDA. She has an MD from the University of California, San Francisco and MPH from the Johns Hopkins School of Public Health.



Leonard Rubenstein is a lawyer who has spent his career in human rights. At Johns Hopkins University he is core faculty of the Center for Public Health and Human Rights, Center for Humanitarian Health and the Berman Institute of Bioethics. Leonard's current work includes advancing protection of health facilities, patients, and health workers in situations of conflict, protecting refugee and migrant health and rights, and exploring the ethical responsibilities of humanitarians and health professionals. He founded and chairs the Safeguarding Health in Conflict Coalition.



Monette Zard is the Director of the Forced Migration and Health Program and Associate Professor of Population and Family Health at the Columbia University Mailman School of Public Health. Her work is focused on the intersection of the humanitarian, human rights and development sectors. She is an expert on global governance and accountability related to forced migration. Monette has previously held positions at the Refugee Studies Centre at Oxford University and the Lawyers Committee for Human Rights (now Human Rights First) in New York.



PANEL RESEARCH METHODS IN CRISIS-AFFECTED POPULATIONS: QUALITY COMPROMISES VERSUS COMPROMISING QUALITY

14:00–15:00

The nature of humanitarian crises creates potential barriers for conducting scientifically rigorous research, but if a sound evidence base for humanitarian public health is to be established then acceptable standards of methodological rigour need to be maintained.

This plenary session will address the design and planning of research in three areas:

- Quasi-experimental alternatives to ‘gold standard’ trial designs.
- The role of qualitative research.
- The value-added of health economics research.

In humanitarian settings, individual or cluster-randomised trials of interventions are often unfeasible due to resource and geographical constraints, or inappropriate due to ethics and the reality of intervention delivery. Instead of compromising trial design or research ethics, researchers could make greater use of existing, valid quasi-experimental alternatives.

Whether stand-alone or as part of mixed methods studies, qualitative data collection and analysis has the potential to illuminate research questions that can’t be meaningfully answered through quantitative approaches. However, qualitative research is sometimes perceived to be of lower value or less demanding of expertise than quantitative methods.

The economic implications of proposed new interventions are an important consideration, as the humanitarian community competes for scarce resources. There is often an (unseen) opportunity to conduct health economics research alongside planned evaluations of interventions. To make the most of this opportunity, it’s important to clearly understand which health economics questions are most appropriate and what is required to conduct robust health economics studies.

BREAKOUT SESSIONS

15:00–16:00

- 2.1 Quasi-experimental research designs
- 2.2 Qualitative data collection and analysis
- 2.3 Applying a health economics lens
- 2.4 What the R2HC portfolio tells us about research methods

CHAIR:

Francesco Checchi is a Professor of Epidemiology and International Health at the London School of Hygiene and Tropical Medicine. His main expertise is quantitative public health measurement and disease control in crisis settings and has worked for Médecins Sans Frontières, the World Health Organization and as a consultant for a variety of other agencies. Francesco has also led Save the Children's humanitarian health team.



SPEAKERS:

Lesong Conteh is a health economist with a research focus on the economics of infectious diseases, primarily malaria, and health system performance in sub-Saharan Africa. She has extensive experience of coordinating multi-country economic evaluations to assess the impact of introducing and scaling up interventions via different delivery strategies. Lesong is an Associate Professor at London School of Economics and academic lead for the African Health Systems and Policy Platform.



Matthew Hunt is an Associate Professor and the Director of Research at the School of Physical and Occupational Therapy of McGill University, and an Associate Member of the McGill Biomedical Ethics Unit and Institute for Health and Social Policy. Matthew conducts research related to ethics of global health practices and research, and on equity of rehabilitation services. His current research looks into the closure of humanitarian healthcare projects, palliative care provision during humanitarian crises, and ethical humanitarian innovation. He co-leads the Humanitarian Health Ethics Research Group: humanitarianhealthethics.net.



Caitlin Tulloch is a Senior Technical Advisor at the International Rescue Commission, where she leads the "Best Use of Resources" team conducting the cost-efficiency and effectiveness of humanitarian programmes. Since 2015 this team has conducted 10 cost-effectiveness analyses as well as more than 100 cost-efficiency studies and created the Systematic Cost Analysis (SCAN) software to enable rapid, field-based analyses. Prior to the IRC, Caitlin interned in the Public Financial Management Unit of World Bank Indonesia and spent four years at the Poverty Action Lab.



Courtney Welton-Mitchell PhD is a social psychologist and mental health clinician. Courtney is currently a Research Associate at the Institute of Behavioral Science, Natural Hazards Center, CU Boulder. She is also a Clinical Assistant Professor at the Colorado School of Public Health, Anschutz Medical Campus. Courtney is co-founder and former director of the Humanitarian Assistance Applied Research Group at the Korbel School of International Studies, DU. She is also a former Fulbright Scholar with the Center for Women and Research, University of Science Malaysia and has worked with organizations such as WFP and UNHCR.

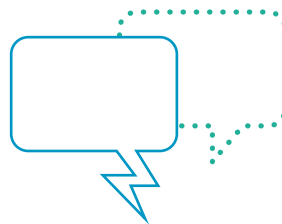


LIGHTNING TALKS

SOUTH-NORTH RESEARCH

PARTNERSHIPS: WHAT WORKS WELL?

16:30–17:15



A recent independent review of research partnerships within the R2HC's research study portfolio reported that:

“The quality of relationships and processes affect the quality of research” and “valuing the knowledge and expertise of in-country partners and local/affected populations in processes such as research design and data analysis can enhance the research by generating better quality data and more relevant findings.”

We strive to make sure the research teams we fund are diverse and representative. We have built this ambition into our Funding Calls which now have a requirement for each research team to include an academic researcher from the global South. Amongst other things, this is to ensure the inclusion of local knowledge and culturally appropriate approaches.

We work to recognise and tackle the invisible barriers created by power dynamics in research partnerships, that are obstacles to equitable partnerships for Southern researchers. But we know we can do more. So, through a series of short ‘lightning talks’, we will hear first-hand insights into what has worked well in South–North research partnerships.

Speakers represent diverse voices from across the work we fund, and each will have three minutes to share their thoughts on:

- What makes a meaningful, equitable South–North research partnership
- What has worked well
- What could be done better

SPEAKERS:

Mohamed Jelle

Rana Dajani

Dónal O'Mathúna

Courtney Welton–Mitchell

Denis Nono

Stefan Jansen

Sara Casey

Junaid Razzak

DAY 2

CHAIR:

Jimmy Whitworth is Professor of International Public Health at the London School of Hygiene and Tropical Medicine, specialising in infectious diseases, epidemiology and public health. Previously he was Head of International Activities and Population Health at Wellcome. Jimmy is the Chair of our R2HC Advisory Group.



KEYNOTE DISCUSSION THE ROLE OF RESEARCH IN CONTRIBUTING TO IMPROVED HEALTH OUTCOMES IN HUMANITARIAN SETTINGS: HOW NEW EVIDENCE IS USED TO INFORM DECISION-MAKING

09:00–10:00

There is an increasing imperative for humanitarian response to be informed by the latest evidence, although the role of public health research in contributing to this process is not always clear.

Providing examples from their experiences, the speakers will discuss how those in key influential positions use research to influence decisions. It will consider how researchers can play a greater role in contributing to the decision-making process, and whether a greater emphasis on engagement with people and communities affected by crises will enhance the impact of research on humanitarian health policy and practice.

This session will include panellists who represent a government directly affected by humanitarian crises, a donor government, and a senior public health expert with experience of working within the UN system.

Miatta Gbanya will share her perspective from Liberia's experience during the 2014–2015 Ebola outbreak, as well as her experience of decision-making within the wider government of a country previously affected by humanitarian crises.

Alastair Ager will share his reflections based on his experience and understanding of the contribution research can make to humanitarian health crisis decision-making, particularly in terms of influencing and supporting the UK government.

Ann Burton will reflect on how evidence is used to inform the work of UNHCR.

CHAIR:

Mushtaque Chowdhury is the Vice Chair of BRAC, the world’s largest non-governmental organisation. He is also Professor of Population and Family Health at Columbia University in New York and has worked as the Senior Adviser to the Rockefeller Foundation. Mushtaque holds a PhD from the London School of Hygiene and Tropical Medicine, and a MSc from the London School of Economics. He is the founding Dean of the James P. Grant School of Public Health of BRAC University. He is the recipient of the 2017 ‘Medical Award of Excellence’ from the Ronald McDonald House Charities.



SPEAKERS:

Alastair Ager is Deputy Chief Scientific Adviser for the UK Department for International Development. He holds academic positions with Queen Margaret University, Edinburgh as Director of the Institute for Global Health and Development and with Columbia University, New York as Professor of Population & Family Health. Alastair has been a member of the R2HC Funding Committee and is also a grant recipient.



Ann Burton is a medical doctor and Chief of the Public Health Section at UNHCR. She has almost twenty years of experience in international health programming with governments, NGOs and UNHCR. Most of this has been with conflict-affected and displaced populations in Asia, East Africa and the Middle East.



Miatta Zenabu Gbanya is a Public Health Practitioner, Registered Nurse and has served on various humanitarian missions in the Democratic Republic of Congo, the Sudan and South Sudan working on large scale projects. She has also served as the first Liberian fund manager for the Health Sector Pool Fund at the Ministry of Health in Liberia. She has been involved in emergency preparedness and the response to cholera, meningitis, and measles outbreaks. In 2014 she served as the Deputy Incident Manager for the unprecedented Ebola epidemic in Liberia. Miatta serves as an adjunct faculty for Health Systems Management at the James P. Grant School of Public Health, is a co-author of multiple published papers and an Eisenhower Fellow.



.....

PANEL BEYOND IRB APPROVAL: SOME KEY ETHICAL ISSUES RELATED TO HUMANITARIAN RESEARCH

10:00–11:00

Access to communities in unstable or emergency settings is a major challenge facing researchers, along with uncertainty on how to address ethical considerations given the vulnerability of people who are the subjects of a study.

Research ethics has traditionally tended to focus on questions of ethical approval and informed consent. More recent developments in research integrity highlight the importance of addressing the broader collection of ethical issues that arise during the different research phases, including research design, implementation and dissemination, and utilisation of findings by different stakeholder groups.

There is a growing body of literature and experience relating to pressing research ethics challenges, some of which will be discussed by the panel and further explored in discussion groups.

Certain challenges specific to the ethics of conducting research in crisis affected countries will be explored, including engagement with Southern research institutions and researchers, data ownership and the use of pragmatic research design.

.....

BREAKOUT SESSIONS

11:30–12:30

- 3.1 Ethics and novel research design
 - 3.2 South–North research partnerships: how can we do better?
 - 3.3 Data: ownership or stewardship?
 - 3.4 Engaging with affected communities
-

CHAIR:

Lisa Schwartz is the Arnold L. Johnson Chair in Health Care Ethics with the Faculty of Health Sciences, Professor in the Department of Health Research Evidence and Impact, member of the Centre for Health Economics and Policy Analysis, and Associate Member of the Department of Philosophy at McMaster University. She is a member of the Ethics Review Board of Médecins Sans Frontières.



SPEAKERS:

Rebecca Esliker has been Head of Department of the Clinical Counselling department and Mental Health Specialist at The University of Makeni since 2015, leading on tasks such as Clinical Supervision, Training of Medical Personnel in the mhGAP and Psychological First Aid Training (PFA). During this time Rebecca worked as a field research partner on an R2HC-funded research project on PFA with War Trauma. She holds a PhD from Walden University, Baltimore, and an MA and BA in Psychology from University College Dublin, Ireland. She also holds accreditation in child development and is a Licensed Professional Counselor.



Raffaella Ravinetto holds a Master's Degree in Pharmacy from the University of Torino; a Postgraduate Diploma in Tropical Medical Biology from the Institute of Tropical Medicine (ITM); and a PhD in Biomedical Sciences from the KU Leuven. She is currently a senior researcher and policy advisor at the Public Health Department of the ITM and the chairperson of the ITM Institutional Review Board, the chairperson of the MSF Ethics Review Board, and an ethical reviewer or ethical advisor for some EU-funded research projects. She was president of MSF Italy from 2007 to 2011.



Charles Weijer is Professor at the Rotman Institute of Philosophy at Western University in London, Canada. He is the leading expert on the ethics of randomized controlled trials and co-led a collaboration that produced the first international ethics guidelines for cluster randomized trials. Charles's current work explores ethical issues in pragmatic randomized controlled trials that evaluate health interventions in real-world conditions to better inform patients, health providers and health systems managers. He founded the Rotman Institute of Philosophy, which fosters collaboration between the humanities and the sciences and served as the Institute's first director. In 2016, he was elected to the Royal Society of Canada.



PANEL RESEARCH IMPACT: WHAT ARE THE ROUTES FOR PUBLIC HEALTH RESEARCHERS TO INFLUENCE HUMANITARIAN DECISION-MAKING?

13:30–14:30

Humanitarians lack quality, rigorous evidence on which to base decisions, though progress is being made by R2HC and others in funding research that addresses key evidence gaps. The academic sector, meanwhile, is under pressure to demonstrate the impact of publicly funded research on solving real-world problems.

To influence humanitarian decisions evidence must be informed by needs and provided in the right format, at the right time, to the right people. It can be challenging for researchers to design engagement and impact strategies within these constraints, especially as humanitarian decision-making is complex, fragmented and fast-paced.

Encouraging an understanding of how policymakers and practitioners use and apply research when making decisions can help address this challenge and build collective knowledge. The panel will explore examples of how research has successfully influenced humanitarian health policy and practice and highlight different routes to achieving impact.

Speaking from a range of perspectives, government, academic and INGO, the panellists will share their experiences of how researchers have engaged with humanitarian policymaking, and effectively translated research into evidence that can be used by policymakers and practitioners.

Examples range from those within a national Ministry of Health, those with experiences of engaging with a humanitarian cluster, and informing policy and practice within a humanitarian organisation.

The panel will also discuss approaches to tackling common barriers to uptake and impact, including how to make best use of partnerships and the role of researchers in successfully scaling interventions.

BREAKOUT SESSIONS

14:30–15:30

- 4.1 Engaging national governments in research evidence
- 4.2 Humanitarian INGOs engage with production, use and uptake
- 4.3 Co-producing research: identifying solutions to common pitfalls
- 4.4 Research impact via global coordination mechanisms

CHAIR:

Alice Obrecht leads several projects at ALNAP. Her work focuses on improving the understanding of evidence, innovation, accountability, and adaptiveness in humanitarian response. Alice has extensive experience in qualitative research design and conceptual analysis across a variety of research topics in humanitarian action. Previously, Alice was at the Humanitarian Futures Programme at King's College, London. She earned her PhD in 2011 from the London School of Economics.



SPEAKERS:

Rabih El Chammay is a psychiatrist and currently the head of the National Mental Health Programme at the Ministry of Public Health in Lebanon. After founding the programme, he led the development and is currently overseeing the implementation of the first National Mental Health and Substance Use Strategy 2015–2020. Rabih has been working in public mental health, refugee mental health and health system strengthening policy and programming at the national, regional and international level for more than 10 years. He is a member of the Department of Psychiatry at the faculty of Medicine at Saint Joseph University in Beirut.



Daniele Lantagne (MIT BS, MIT MEng, PE) is an Assistant Professor in Civil and Environmental Engineering at Tufts University. She joined the Center for Disease Control and Prevention in 2003 and has also provided technical assistance and evaluation in more than 50 countries. Her main research interest is how to develop and disseminate interventions that reduce the burden of diarrhoeal disease and cholera in both development and emergency contexts. She received her PhD in 2011 from the London School of Hygiene and Tropical Medicine.



Stephanie Stern leads Action Contre La Faim/Action Against Hunger Knowledge LAB, which explores innovative ways to facilitate knowledge uptake. She works to ensure that evidence produced is tailored to users' needs, 'ready to use' and easily accessible, and facilitates and supports the design of innovative tools and methodologies to reinforce the link between research and programmes and policies. Previously she has been an Associate Research Fellow at the Institut de Relations Internationales et Stratégiques (IRIS) and was a Research Project Manager at Save the Children International. Stephanie received an MA in Strategic Programming from IRIS and is a graduate of the Humanitarian Leadership Programme at Deakin University.



CLOSING PANEL

REFLECTIONS & FUTURE DIRECTION

Individuals closely associated with the R2HC will reflect on key messages coming out of the Research Forum and the implications of these messages for public health research in humanitarian crises.

As the only initiative specifically focused on influencing humanitarian health policy and practice through the funding of research, the panel will consider ways in which the R2HC might evolve.

CHAIR:

Jess Camburn is Chief Executive Officer at Elrha. She has developed and led the organisation from its beginnings in 2009 to its place today as a leading global actor in humanitarian research and innovation. Jess works closely with our Board of Trustees and leadership team to make sure we have the vision, strategy, talent and experience to deliver transformative results in humanitarian response. Jess sits on a number of strategic Boards for UK research and innovation, including the UK Disaster Research Group and the Strategic Advisory Group for the Global Challenge Research Fund.



SPEAKERS:

Anne Harmer is Head of the R2HC programme, and has a background in public health. Before joining Elrha she spent more than 20 years managing sexual and reproductive health programmes in South East Asia, working with UNFPA, the European Commission and NGOs.



Chris Porter is Humanitarian Head of Profession at the UK Government's Department for International Development (DFID), with part of his role supporting DFID teams in better using evidence in their humanitarian policy and programme work. He was previously DFID's humanitarian and resilience adviser for Kenya and Somalia, and has twenty years of experience elsewhere within DFID, UN OCHA, and UNHCR. Chris has also done independent consultant work for clients including UNICEF, Red Cross and the World Bank.



Val Snewin is Head of Global Health Research Partnerships in the Department of Health and Social Care (UK Ministry of Health). Val is responsible for developing and delivering a £430M global health research programme with Official Development Assistance (ODA) funding from the UK aid budget, through the UK National Institute for Health Research (NIHR) and by developing partnerships with other funders. Previously Val was International Activities Manager at Wellcome and was instrumental in establishing research capacity strengthening programmes, shifting the centre of gravity to low-and-middle-income countries. Val has a research background in tuberculosis and malaria.



Jimmy Whitworth is Professor of International Public Health at the London School of Hygiene and Tropical Medicine, specialising in infectious diseases, epidemiology and public health. Previously he was Head of International Activities and Population Health at Wellcome and is the Chair of our R2HC Advisory Group.



SKILLS BUILDING DAY

FOR CURRENT R2HC GRANTEES

12 SEPTEMBER, 08:45–17:00

(invite only event)

We aim to provide our grantees with the resources and practical support they need to deliver high quality, ethical health research with the maximum potential to influence humanitarian policy and practice. Such research needs to be underpinned by strong leadership governance and effective partnerships.

The Skills Building Day is a one day event following the Research Forum that will support the development of the skills and competencies needed to deliver on research objectives.

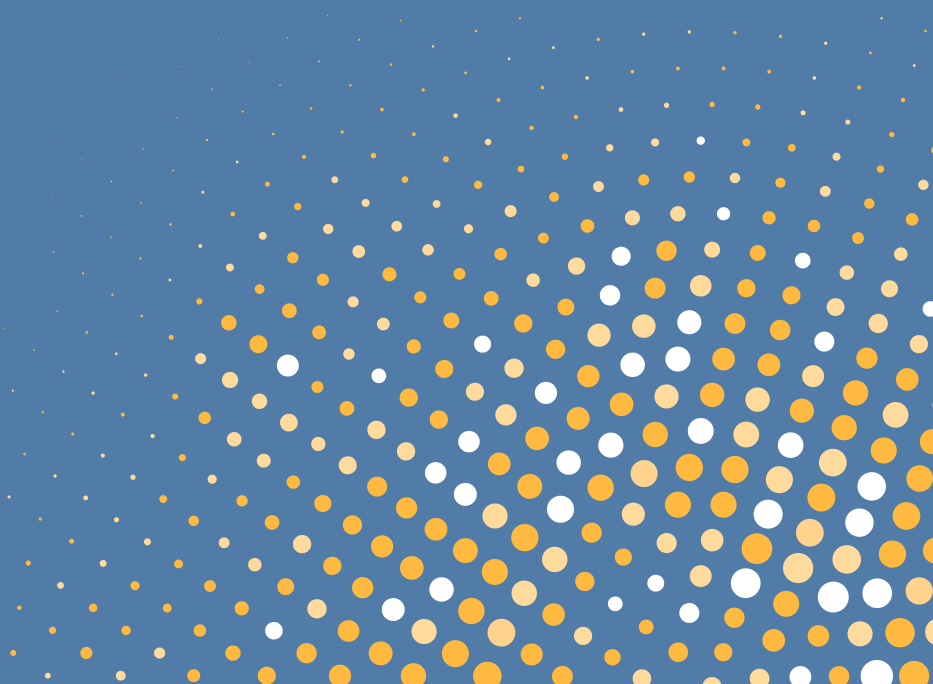
It is also a place for networking, peer learning, knowledge sharing and relationship building.

The agenda is comprised of interactive, skills-based workshops covering priority learning areas selected in consultation with our grantees.

This year's learning topics include communicating with different stakeholder audiences, managing effective research team partnerships, and practical approaches to managing risk.

The sessions will be facilitated by members of the Elrha team and external trainers.

KEY INFORMATION



ELRHA TEAM



Jess Camburn
CEO



Kate Hart
Programme Director



Anne Harmer
Head of R2HC Programme



Simon Pickard
Portfolio Manager



Cordelia Lonsdale
Research Impact Manager



Robert Vokes
Programme Officer



Camilla Brueton
Event Coordinator



Laura Dowds
Administrative Assistant



Anna Skeels
Head of HIF Programme



Liz Rawlins
Communications Manager



Heather Arnold
Communications Officer

We are pleased that colleagues from our our sister programme, the Humanitarian Innovation Fund (the HIF), will be joining us at the Forum. They are included in the participants list on pages 30–31.

R2HC ADVISORY GROUP



.....
Jimmy Whitworth (Chair)
Professor of International
Health, London School of
Hygiene and Tropical Medicine



.....
Carlos Navarro Colorado
Principal Advisor, Public Health
Emergencies, UNICEF



.....
Esperanza Martinez
Head of Health, International
Committee of the Red Cross/
Crescent



.....
Mushtaque Chowdhury
Vice Chair of BRAC and Professor
of Population and Family Health at
Columbia University in New York



.....
Paul Spiegel
Professor and Director of Johns
Hopkins Center for Humanitarian
Health, Johns Hopkins University



.....
Renee van de Weerd
Chief, Emergency Management
and Support, World Health
Organization

R2HC FUNDING COMMITTEE



.....
Therese McGinn (Chair)
(Also on our Advisory Group)
Professor Emerita of Population
and Family Health, Columbia
University



.....
Iza Ciglenecki
Operational Research
Coordinator, Médecins Sans
Frontières



.....
Shannon Doocy
Associate Professor, Center for
Humanitarian Health,
Johns Hopkins University



.....
Emmanuel D'Harcourt
Senior Public Health Physician,
Independent



.....
Fouad M. Fouad
Assistant Professor of Public
Health Practice, American
University of Beirut



.....
Michelle Gayer
Director Emergency Health,
International Rescue Committee



.....
Michelle Hynes
Epidemiologist, Emergency
Response and Recovery Branch
(ERRB), U.S. Centers for Disease
Control and Prevention



.....
Adam Levine
Associate Professor of
Emergency Medicine,
Warren Alpert Medical School
of Brown University



.....
Nate Miller
Health Advisor, UNICEF



.....
Oliver Morgan
Director of the Health Emergency
Information and Risk Assessment
Department, WHO Health
Emergencies Program



.....
Bayard Roberts
Professor Health Systems and
Policy, London School of Hygiene
and Tropical Medicine

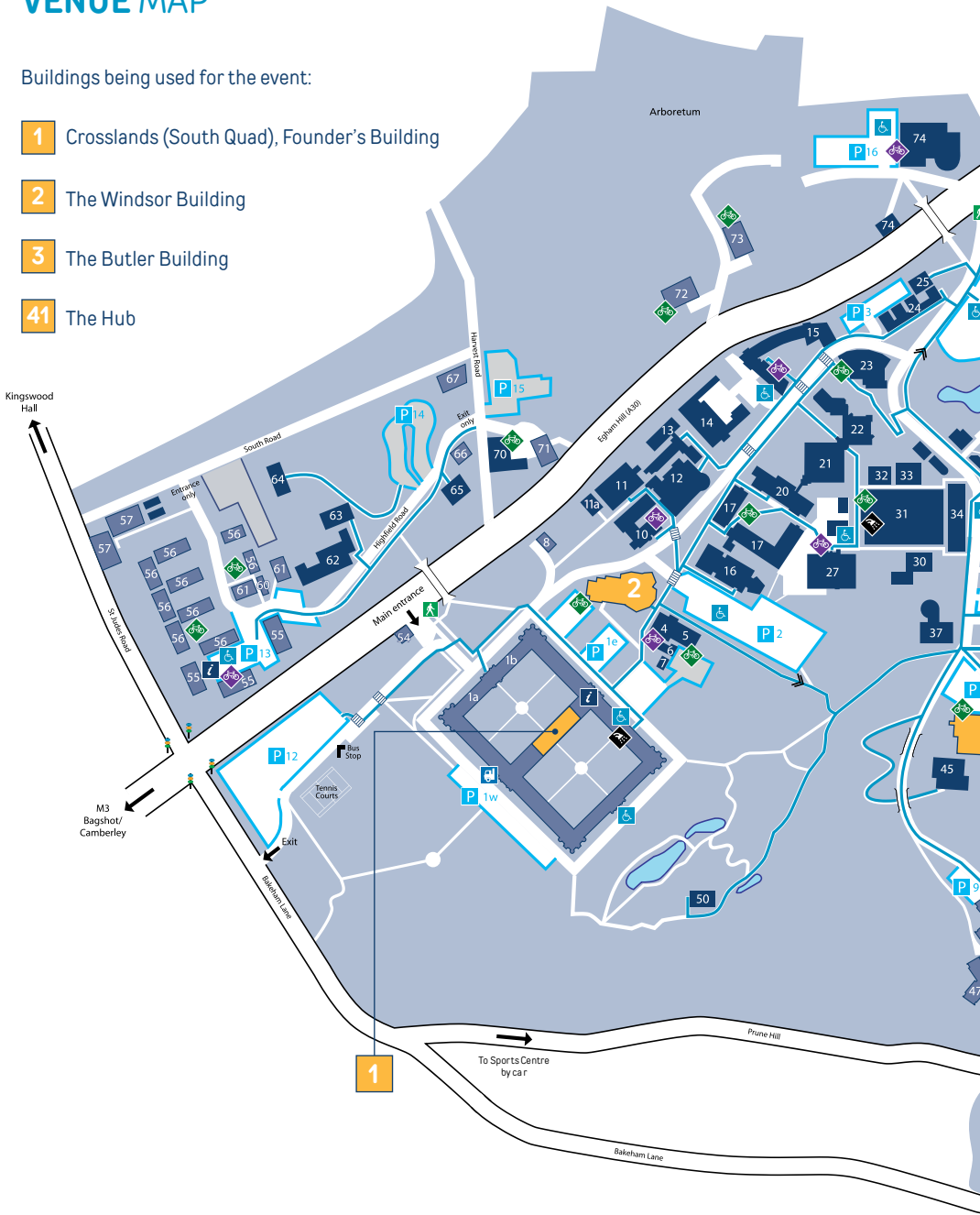


.....
Les Roberts
Professor, Population & Family
Health, Columbia University

VENUE MAP

Buildings being used for the event:

- 1 Crosslands (South Quad), Founder's Building
- 2 The Windsor Building
- 3 The Butler Building
- 41 The Hub





Academic departments and centres

- 1 Archive and Bedford Centre
- 31, 34 Biological Sciences
- 1 Classics & Philosophy
- 17 Computer Science
- 16 Criminology & Sociology
- 74 Drama & Theatre
- 25, 14
- 35, 36, 36a Earth Sciences
- 20 Economics
- 15 English
- 1 European Studies
- 35, 36, 36a Geography
- 15 Hellenic Institute
- 17 History
- 12, 13, 1 Management
- 17 Mathematics
- 11 Media Arts
- 15 Modern Languages
- 15 French
- 15 German
- 15 Hispanic Studies
- 15 Italian
- 62, 65 Music
- 21, 22 Physics
- 1 Politics & International Relations
- 34, 30 Psychology
- 15 Royal Holloway International
- 16 Social Work

Founder's Building
Bourne & Wolfson Laboratories
Founder's Building (west ground floor)
McCrea Building
Arts Building
Sutherland House and Lodge ☒
Handa Noh Theatre, Boilerhouse Complex
Queen's Building, Annexe & John Bowyer Building
Horton Building ☒ (upper floor)
International Building
Founder's Building (west first floor)
Queen's Building & Annexe
International Building
McCrea Building
Moore Building ☒, *Annexe*
& Founder's Building (east first floor)
McCrea Building
Williams Building ☒ & *Arts Building (ground floor)*
International Building
International Building
International Building
International Building
International Building
Wetton's Terrace ☒, *Woodlands* ☒
Tolansky & Wilson Laboratories
Founder's Building (west first floor)
Wolfson Laboratory, Bourne Annexe
International Building
Arts Building

Facilities and services

- 27 Bedford Library
- 14 Boilerhouse
- 70 Botanic Supply Unit
- 15 Café Jules ☒
- 20 Careers Service
- 1b Chapel
- 1, 51 College Administration
- 10 Computer Centre ☒
- 1 Crosslands ☒
- Crosslands Bungalow
- 4 incorporating College Bookshop
- 37 Electron Microscopy Unit
- 24 Enterprise Centre, Orchard Building
- 26 Estates Workshop
- 1 Founder's Library
- 8 Garden Lodge, music practice
- 1 Health Centre
- 51 Huntersdale
- 50 Jane Holloway Lecture Hall
- 5 Laundry, Muslim Prayer Room ☒
- 39 Library Depository
- 64 Little Echoes Day Nursery
- 1 Main Lecture Theatre
- 45 Medicine & Stumble Inn ☒
- 32 Munro Fox Lecture Theatre
- 33 Munro Fox Lab & Seminar Room
- 7 Natwest Bank
- 1a Picture Gallery
- 46 Sports Centre & Fields
- 4 Student Administration Centre
- 23 Students' Union ☒
- 41 The Hub/Imagine ☒
- 6 The Store on Campus
- 63 Wetton's Annexe
- 2 Windsor Building
- 66 Woodlands Cottage, music practice

Residences

- 72 Beeches ☒
- 3 Butler Hall
- 73 Chestnuts ☒
- 38 Depository Lodge
- 1 Founder's Building
- 54 Gate Lodge ☒
- 48 Gower Hall incl. Sang Il Lee Hall
- 67 Harvest Road No 1
- 41 The Hub
- 57 Highfield Close
- 60 Highfield Cottage
- 55 Highfield Court
- 75 Kingswood Hall
- 61 Penrose Court (Flats)
- 56 Penrose Court (Houses) ☒
- 41 Reception & Hub
- 42 Reid Hall
- 43 Runnymede Halls 1 & 2
- 9 Tuke Hall
- 47 Wedderburn Hall
- 11a Williams Annexe
- 40 Williamson Hall
- 65 Woodlands ☒

☒ Non-accessible Buildings

VENUE & EVENT INFORMATION

Royal Holloway, University of London, is set within 135 acres of stunning parkland and is home to the magnificent Founder's Building. Completed in 1881 and opened by Queen Victoria in 1886, it is considered one of the world's most spectacular university buildings.

VENUE ADDRESS & CONTACT INFORMATION

Royal Holloway, University of London,
Egham, Surrey, TW20 0EX

Venue contact number (Security)

01784 443 063

Elrha contact information:

Camilla Brueton, Event Coordinator

07947 127 240

Laura Dowds, Administrative Assistant

07949 564 404

In case of emergency please call **999** and request the relevant emergency service (Police, Fire, Ambulance).

ACCOMMODATION

En suite accommodation for participants will be in the Butler Building opposite the Hub. Each room has access to a kitchenette with tea and coffee making facilities. There is also a shop, cash point and laundry facilities nearby.

REGISTRATION

Held in the Windsor Building from 17:30–19:00 on Monday 9 September and from 08:30–09:30 on Tuesday 10 September. You will be issued with a name badge which will need to be worn throughout the Forum, including at mealtimes.

DRINKS RECEPTION

Held in the Windsor Building from 17:30–19:00 on Monday 9 September with an informal welcome at 18:00.

DINING

Breakfast daily from 07:30–09:00 in the Hub.

Lunch and refreshments served in the foyer of the Windsor Building.

Dinner:

Monday 9 September – an informal dinner will be available from 19:00–20:00 in the Founder's Dining Hall.

Tuesday 10 September – BBQ from 19:00 in the Crossland Suite (South Quad), Founder's Building.

For those staying an additional night, on

Wednesday 11 September an informal dinner will be available from 19:00–20:00 in the Founder's Dining Hall.

A bar accepting cash and card will be available for alcoholic and soft drinks at dinner.

Dietary requirements have been provided to the venue. If you have not informed us of these, please do so at the registration desk in the Windsor Building.

DRESS CODE

Dress code for the full event, including the informal drinks reception and BBQ, is smart casual.

WI-FI

Free Wi-Fi access is available across the entire campus and accommodation for the duration of your stay.

To log on:

- Open internet browser
- Select 'Guest User'
- Confirm acceptance of terms of use
- Enter the following username and password:

Username: **ELRHA2019**

Password: **RHUL2019**

GET INVOLVED

SOCIAL MEDIA

We are very active on Twitter and LinkedIn so please do share your time at the Research Forum on your own social media if you wish to.

Please tag us **@Elrha** and use the hashtag **#R2HCForum**

RESEARCH FORUM HUB

Have you checked out our Research Forum Hub? This online Hub is the living version of our programme. It has all the information you need to know about the Research Forum and our community of humanitarian public health researchers and practitioners.

Go to the Research Forum Hub to discover attendees and speakers, find out what they are looking to get out of the Forum, what they are interested in, and what they want to talk about. Some have also included their contact details so you can connect during or after the Forum.

How to access the Hub:

Go to: **elrha.org/ResearchForum**

Password: **Research**

WALL ART

Joining us at this year's Research Forum will be a number of artists from *Creative Connection*. Throughout the event they will be acting as 'visual scribes' by taking the key ideas, issues and discussions from the Forum and capturing them in an illustrated piece of wall art.

This wall art will be built from the collective conversations of our community so please feel free to talk with the artists as they are working, sharing your thoughts so you can help shape it.

NOTICES

FILMING & PHOTOGRAPHY

We will be filming and taking photos at this event. If you do not wish to be in any images or footage which will be used by us online, in materials or at future events, please speak to Heather Arnold, Communications Officer or email her at **h.arnold@elrha.org**

SMOKING

Smoking is not permitted in any accommodation or conference facilities.

REPORTING UNACCEPTABLE BEHAVIOUR

We are committed to creating and maintaining a friendly, safe and inclusive environment at our R2HC Research Forum. If you or someone else experiences unacceptable behaviour, or if you have any other concerns, you can report it directly to a member of Forum staff (they will be wearing blue lanyards) or report it by email to: **c.brueton@elrha.org**

PRAYER ROOM & QUIET SPACE

Participants are welcome to use the non-denominational University Chapel for prayer. A quiet space is available in Seminar Room 1.05, Windsor Building during event hours.

PARTICIPANT LIST

Abi Taylor	Elrha	Emily Reilly	Department for International Development, UK
Aemal Akhtar	University of New South Wales, Australia	Emmanuel d'Harcourt	Independent
Alastair Ager	Department for International Development, UK	Epaphrodite Nsabimana	University of Rwanda
Alice Obrecht	ALNAP	Esperanza Martinez	International Committee of the Red Cross
Amelie Sundberg	ALNAP	Fiona McEwen	Queen Mary University London, UK
Andrew Seal	University College London, UK	Francesco Checchi	London School of Hygiene and Tropical Medicine, UK
Angela Francis	Elrha	Gautham Krishnaraj	McMaster University, Canada
Ann Burton	UNHCR	Gilbert Burnham	Johns Hopkins University, USA
Anna Chiumento	University of Liverpool, UK	Hana Rohan	London School of Hygiene and Tropical Medicine, UK
Anna Hoover	World Health Organization	Heather Arnold	Elrha
Anna Skeels	Elrha	Ian McClelland	Elrha
Anne Harmer	Elrha	Iza Ciglenecki	Médecins Sans Frontières, Switzerland
Ben Heaven Taylor	Evidence Aid	James Smith	London School of Hygiene and Tropical Medicine, UK
Bérangère Gohy	Handicap International	Jane Carter	Amref Health Africa
Blythe Beecroft	Fogarty, NIH	Jess Camburn	Elrha
Caitlin Tulloch	International Rescue Committee	Jessie Mbwambo	Muhumbili University, Tanzania
Camilla Brueton	Elrha	Jimmy Whitworth	London School of Hygiene and Tropical Medicine, UK
Cecile Salpeteur Hoareau	Action Contre La Faim, France	Jo Mulligan	Department for International Development, UK
Cecilie Hestbaek	Elrha	Junaid Razzak	Johns Hopkins University, USA
Charles Weijer	Western University, Canada	Karin Hugelius	Örebro University, Sweden
Chris Porter	Department for International Development, UK	Karl Blanchet	London School of Hygiene and Tropical Medicine, UK
Claire Fotheringham	Médecins Sans Frontières, Australia	Katharine Wright	Nuffield Council on Bioethics
Claudia Garcia-Moreno	World Health Organization	Kate Hart	Elrha
Cordelia Lonsdale	Elrha	Kevin Savage	World Vision International
Courtney Welton-Mitchell	Colorado University, USA	Lara Ho	International Rescue Committee
Daniele Lantagne	Tufts University, USA	Laura Dowds	Elrha
Debarati Guha-Sapir	Centre for Research on the Epidemiology of Disasters, Louvain	Laura Kwong	Stanford University, USA
Denis Nono	Makerere University, Uganda	Leonard Rubenstein	Johns Hopkins University, USA
Dominique Porteaud	UNICEF		
Dónal O'Mathúna	Ohio State University, USA		
Edith van 't Hof	World Health Organization		

Les Roberts	Columbia University, USA	Rabih El Chammay	Ministry of Public Health, Lebanon
Lesong Conteh	London School of Economics, UK	Raffaella Ravinetto	Institute of Tropical Medicine, Antwerp, Belgium
Linda Mobula	World Bank	Rana Dajani	Hashemite University, Jordan
Lisa Schwartz	McMaster University, Canada	Rashid Ansumana	Bo University, Sierra Leone
Liz Rawlins	Elrha	Rebecca Esliker	University of Makeni, Sierra Leone
Lubna Baig	APPNA Public Health Institute, Pakistan	Renaud Becquet	INSERM, France
Maciej Polkowski	International Committee of the Red Cross	Renee Van de Weerd	World Health Organization
Maguy Daures	ALIMA	Richard Bryant	University of New South Wales, Australia
Mahbubur Rahman	icddr, Bangladesh	Robert Colebunders	University of Antwerp, Belgium
Martin Busingye	World Vision	Robert Vokes	Elrha
Matthew Hunt	McGill University, Canada	Rohini Haar	University of California, Berkeley, USA
Maureen Murphy	George Washington University, USA	Rola Hallam	CanDo
Megan Gaffey	Department of Health and Social Care, UK	Sam Foster	Elrha
Megan Gallagher	Save the Children USA	Sara Casey	Columbia University, USA
Mesfin Teklu Tessema	International Rescue Committee	Sarah Cotton	International Committee of the Red Cross
Miatta Zenabu Gbanya	Ministry of Health, Liberia	Shannon Doocy	Johns Hopkins University, USA
Michael Pluess	Queen Mary University London, UK	Simon Pickard	Elrha
Michael Toole	Burnet Institute, Australia	Sonia Rastogi	UNICEF
Michelle Gaffey	Sick Kids Canada	Sophie Van Eetvelt	Elrha
Michelle Hynes	Centers for Disease Control, USA	Stefan Jansen	University of Rwanda
Mohamed Jelle	University College London, UK	Stefano Fedele	UNICEF
Monette Zard	Columbia University, USA	Stephanie Stern	Action Contre La Faim, France
Mushtaque Chowdhury	BRAC, Bangladesh	Stephen Raimon	Amref Health Africa
Naoko Kozuki	International Rescue Committee	Sylvia Garry	Department for International Development, UK
Nawaraj Upadhaya	HealthNetTPO	Tam Fetters	Ipas
Nick Leader	Department for International Development, UK	Therese McGinn	Columbia University, USA
Noemi Lopez-Ejeda	Acción Contra El Hambre, Spain	Tristan Hale	Sphere
Prisca Benelli	Save the Children UK	Val Snewin	Department of Health and Social Care, UK

Elrha
Phoenix House
8 Cathedral Road
Cardiff, UK
CF119LJ

✉ r2hc@elrha.org

🐦 @Elrha and #R2HC

🌐 elrha.org

Elrha's R2HC Programme is funded by



NIHR | National Institute
for Health Research